

MAINS PRESSURE MIXER

Product Name: Stainless Steel Sink/ Basin Mixer

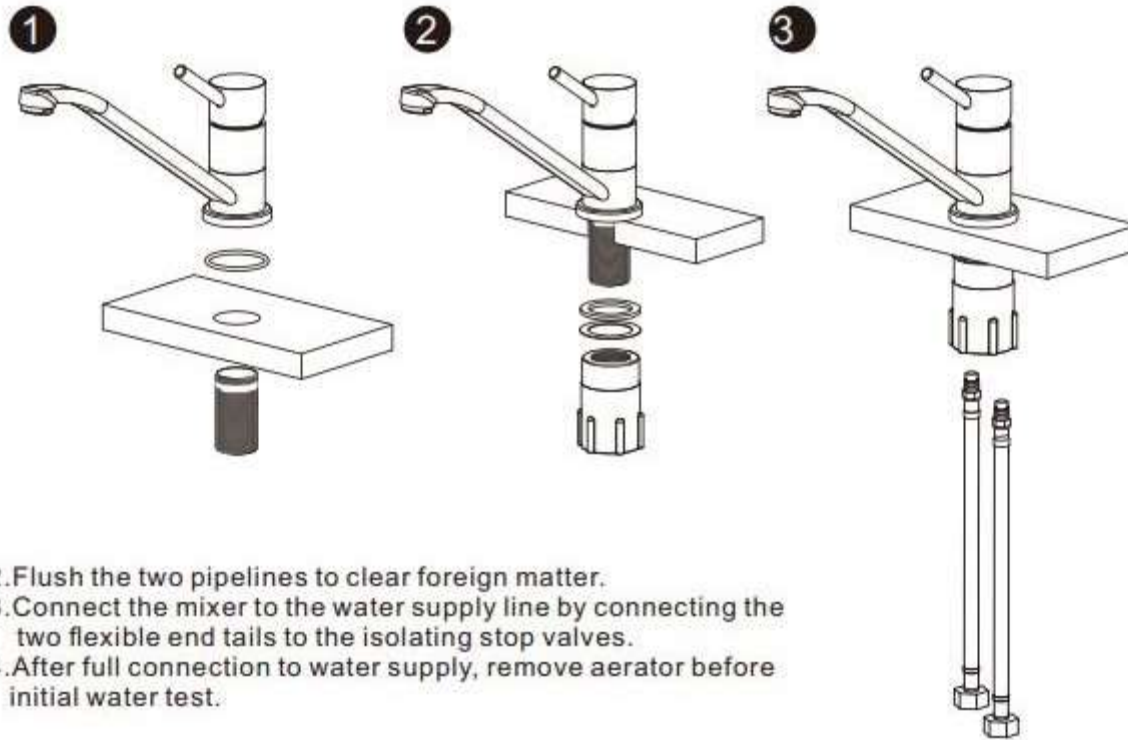
Model No.: MIX22SS/ MIX20SS

Please note it is a mains pressure mixer.

Please ensure that you read and follow these instructions to ensure optimal performance of your mixer.

INSTALLATION INSTRUCTIONS

1. Install the mixer according to below steps ① ② ③



2. Flush the two pipelines to clear foreign matter.

3. Connect the mixer to the water supply line by connecting the two flexible end tails to the isolating stop valves.

4. After full connection to water supply, remove aerator before initial water test.

CARE & CLEANING INFORMATION

1. Clean only with warm soapy water and dry with a soft cloth to maintain the finish.

2. The use of harsh chemicals and abrasive cleaners will damage the finish of the product.

NOTE:

1. Mixer should be installed by a qualified, licensed plumber according to national and state regulations. Failure to comply the instruction will void product warranty.

2. If the incoming water pressure exceeds 500kPa, an approved limiting valve must be installed.

3. Approved operating temperature is not to exceed 80°C, Minimum Operating Pressure 150kPa.